

## MODEL : AIO-30

### HYBRID POWER STATION



#### Design Standards

AIO® is a new range of secure integrated hybrid power station. With diesel generator, solar power, battery storage, wind turbine and hybrid solar Inverter in one secure unit.

AIO® is mainly developed for residents Power, Reduce the dependence on Main Power and decrease the consumption cost.

#### Benefits

- Integrated installation, convenient storage and transportation;
  - High return on investment and quick return;
  - Simple operation and easy maintenance;
  - Power and Capacity can be expanded, meet different user needs;
- Accept customer customization, suitable for various scenarios;

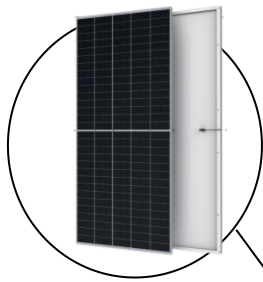
#### Warranty

- Battery Performance: 2000 cycles(80% DOD) or 2 years after manufacture;
- Generator: 18 months after manufacture or 1500 hours running time;



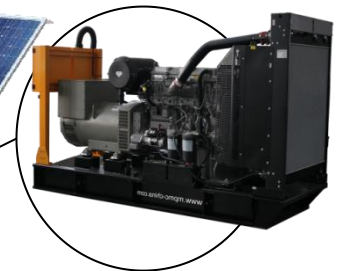
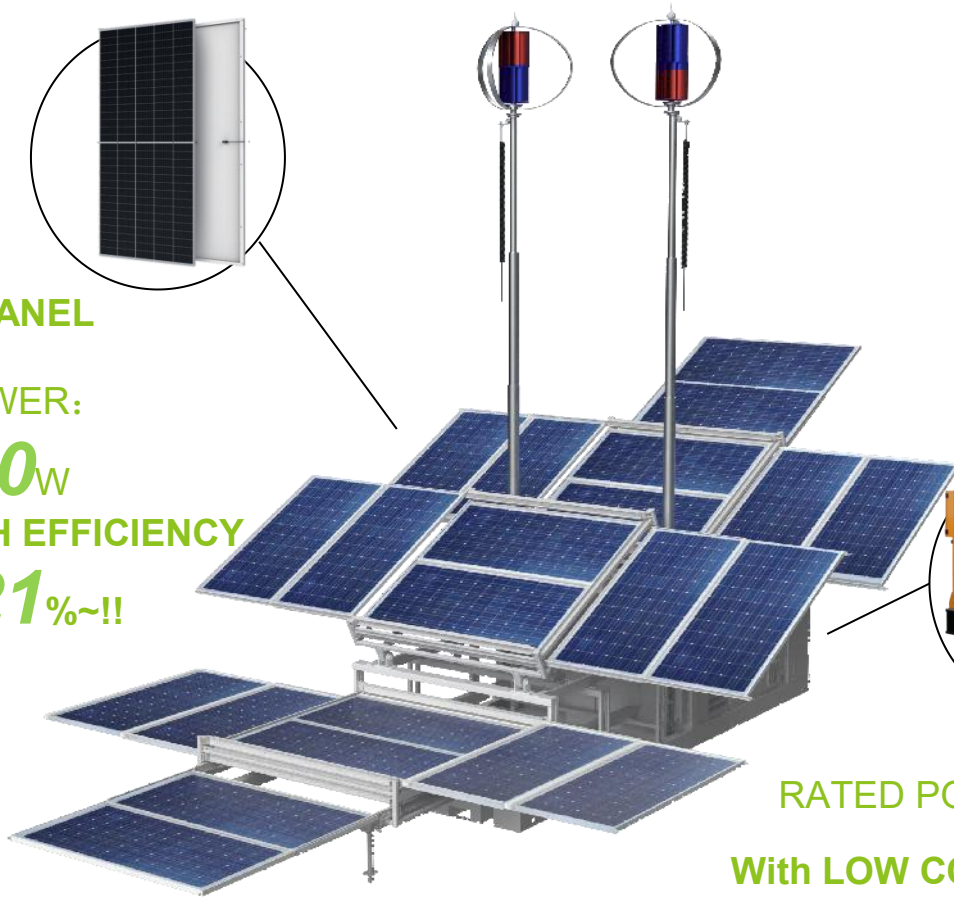
#### General Specification

Model	AIO-30
System Rated Output Power	30 kVA
Rated Output Voltage	400V/230V@50Hz/60Hz,3ph. (According to customer requirements)
Min.Battery Storage Capacity	40 kWh
Max.Battery Storage Capacity	60 kWh
Output Terminals	Copper terminals & CEE 63A/5P Socket
Expand Dimension(W*D*H)	9000*6350*7000mm
Loading Dimension(W*D*H)	5900*2280*2230mm
Net.Weight	8500kg
Loading Capacity of 40'HC	2 units
Discharge Temperature Range	-20°C~50°C

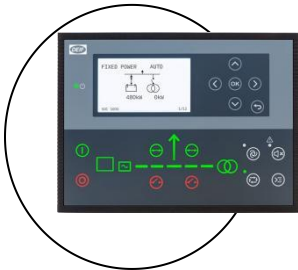


**SOLAR PANEL**

MAX.POWER:  
**10120<sub>W</sub>**  
With HIGH EFFICIENCY  
UP TO **21%~!!**



**GENERATOR**  
RATED POWER: 16kW  
With LOW CONSUMPTION  
DOWN TO **5.3 L/H~!!**



**INTELLIGENT PCS**  
with EMS  
**EASY OPERATION ON**  
**ONE SCREEN**

**Fits the practical  
application & guaranteed  
by high-quality  
manufacturing  
technology**



### Generator Set

Prime Power	20 kVA
Fuel Consumption	5.3 L/h@100% load
Fuel Type	Diesel(Nature Gas Engine for option)
Fuel Tank Capacity	12 hours
Base Functions	Automatic Start-up / Alarm / Automatic Stop / Emergency Stop / Load Management

### Solar Panel

Maximum Power	460W
Qty.	22pcs

### Energy storage battery

Cell Type	LFP(LiFePO4)
Pack Model	MF51100
Pack Capacity	5 kWh
Pack Rated Voltage	51.2 VDC
Charger/Discharge Current	97.7 A(1.0C)
Battery Rack Voltage	345.6V~708V
Rated Cycle Life	≥2000 (80% DOD)

### Power Conversion System

EMS	ASC 150(DEIF)
AC Voltage Range	400V(480V@60HZ)
Max.Charge/Discharge Current	90A
Max.Conversion Efficiency	97.6%
Rated Output Power	30kVA(0.8leading~0.8lagging)

### DC/DC Converter

Solar Controller	MPPT*6
------------------	--------

### Wind Turbine

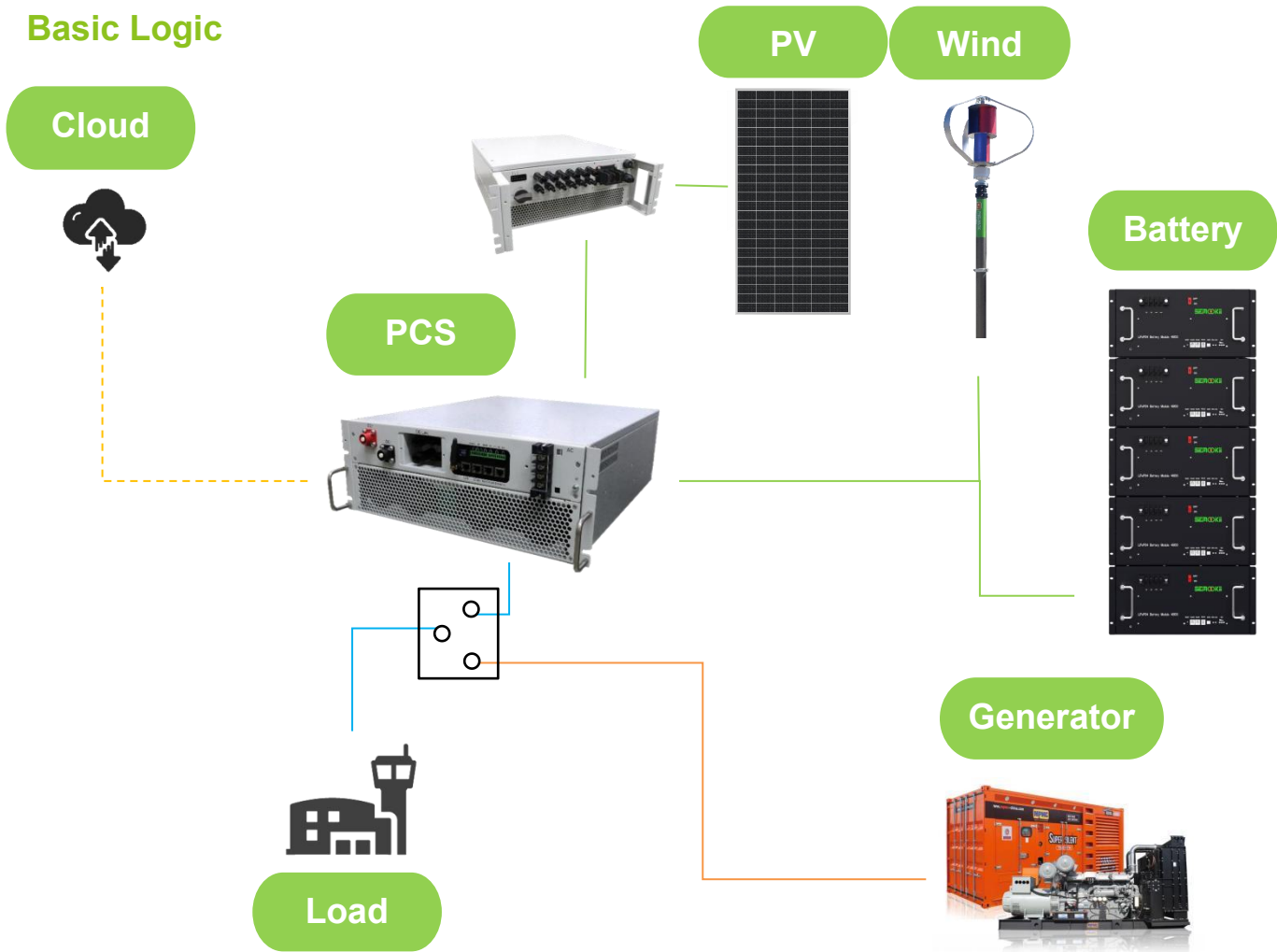
Rated Power	400W*2pcs
Stand Running Condition	Start-up wind speed>2m/s;Rated wind speed>10m/s;Survival wind speed<45m/s

## Options

Engine	Alternator	Fuel System	Hybrid Power Station
Water Jacket Preheater Oil Preheater Oil manual pump	PMG excitation Space heater Winding temperature measuring	12 / 24 hour base tank Bunded fuel tank External fuel tank Automatic fuel feeding Switch between external tank and base tank (three-way valve)	Deepsea, ComAp, Smartgen etc. controller Trailer Tools with the machine

# MPMC BEYOND ENERGY

## Basic Logic



Power Priority	Highest	Secondary	Back Up
Functions	PV Take load/charge	Battery Take load	Generator Take load/charge



**MPMC POWERTECH CORP.**  
sales@mpmc-china.com | www.mpmc-china.com

Photographs are for illustrative purposes only and may not reflect final specification.

### Follow us

- <https://www.facebook.com/mpmcgroup>
- <https://www.linkedin.com/company/mpmcpowertech/>
- <https://www.youtube.com/user/MPMCGenerator>

All information in this document is substantially correct at time of printing and may be altered subsequently. Final weight and dimensions will depend on completed specification.